

SUPPORT



EXCHANGE



SHARING



TEAMWORK



SUCCESS



COLLABORATIONS

Dr. Kiran C. Patel College of Osteopathic Medicine
FACULTY *and* STAFF NEWSLETTER • SUMMER 2019

Anthony J. Silvagni Bids Adieu to NSU

On May 30, the KPCOM bid a fond farewell to Anthony J. Silvagni, D.O., Pharm.D., M.S., FCOFP *dist.*, FCPP, dean emeritus and director of international medicine, at a retirement reception honoring his 21 years of service to the college.

“I have never been in any position for 21 years, so it’s hard for me to believe this much time has gone by,” said Silvagni, who served as KPCOM dean from July 1998 through January 2015. “I stayed because of the energy and innovation the faculty and staff members always brought to the program, as well as the drive to develop new knowledge for the improvement of patient care.”

During his fruitful stint as the KPCOM’s fearless leader, Silvagni helped oversee a sustained period of growth and achievement even he couldn’t have foreseen when he became the college’s fourth dean.

“When I was dean, it felt like I had a new job every week due to everything that was happening in regard to building the school and creating new programs,” he added. “The greatest reward was watching various faculty members get recognized in the literature and through their professional organizations. I would not trade my time at NSU for anything I’ve ever done professionally in my life.”



To honor Silvagni’s iconic mustache, the college presented him with a clever sculpture to celebrate his illustrious years of service. Pictured, from left, are Anthony J. Silvagni; Elaine M. Wallace, D.O., M.S.⁴, KPCOM dean; and Dianna Silvagni, J.D.

Collaborations

is produced by
Nova Southeastern University
Dr. Kiran C. Patel College
of Osteopathic Medicine
3200 South University Drive
Fort Lauderdale, FL 33328-2018
osteopathic.nova.edu
facebook.com/novaosteopathic

DR. KIRAN C. PATEL COLLEGE OF OSTEOPATHIC MEDICINE

ELAINE M. WALLACE, D.O., M.S.⁴
Dean

EXECUTIVE EDITOR

SCOTT COLTON, B.A., APR
HPD Director of
Medical Communications
and Public Relations
(954) 262-5147
scottc@nova.edu

GRAPHIC ARTIST

BRANDEE EVANS
HPD Graphic Designer

CONTRIBUTOR

ODESSA PEMBERTON
Employee Services Consultant I

STAFF LIAISON

ROBERTA DUENAS
Manager of Administrative Services



De Gaetano



Chamberlain



Martinez

Girl POWER Dominates at Dean's Awards

On June 27, four distinguished faculty and staff members were honored with the annual Dean's Awards, which are selected by the college's dean, Elaine M. Wallace, D.O., M.S.⁴

Hilda M. De Gaetano, D.O., M.S., FACOP, FAAP, senior assistant dean of preclinical education, was named Faculty Member/Administrator of the Year, while **Melissa Chamberlain, M.B.A.**, director of graduate admissions, and **Manelle St. Hilaire, M.P.H.**, director of preclinical education at the Tampa Bay Regional Campus, received the Director/Manager of the Year accolade. **Evelyn Martinez**, medical outreach program coordinator, was named Coordinator/Staff Member of the Year.



GOOD LUCK!



Fond Farewells to Kara Brien and Cinthya Silva

On May 22, the college coordinated a farewell reception for two staff members—**Kara Brien, M.B.A., CSSBB, CAPM**, academic program manager in the Office of Clinical Education, and **Cinthya Silva**, administrative coordinator II.

Brien, who joined the college on July 26, 2010, left the KPCOM to launch her own business, which specializes in data-driven quality improvement projects. When asked what she would miss most about the KPCOM, she replied, "the family atmosphere."

Silva left the college to pursue her nursing education at Cambridge College of Healthcare & Technology in Delray Beach, Florida.

Kara Brien and Cinthya Silva pose with their farewell sculptures.

UPDATES IN MEDICINE WEEKEND

Informs, Entertains

On May 31–June 2, the fourth annual **Updates in Medicine: A Global Health Retreat** weekend at the Wyndham Grand Clearwater Beach in Florida attracted more than 400 attendees. The family-oriented continuing medical education (CME) weekend focused on global health initiatives, strategies, and advancing global health care through education and research.

Participants included KPCOM faculty and staff members, rural and urban underserved medicine preceptors, Consortium for Excellence in Medical Education members, clinical directors of medicine, and Interdisciplinary Generalist Curriculum physician educators. During the action-packed event, participants had the opportunity to earn 5.5 CME credits, attend meetings, and participate in hard-hat tours of the new Tampa Bay Regional Campus, as well as network and socialize with peers.

2019 UPDATES IN MEDICINE...

A Global Health Retreat



The fifth annual **Updates in Medicine: A Global Health Retreat** weekend will take place June 5–7, 2020.





UPDATES IN MEDICINE...

A Global Health Retreat





UPDATES IN MEDICINE... A Global Health Retreat



FACULTY/STAFF ACHIEVEMENTS *and* PRESENTATIONS



BRONSBURG



COHEN



COOK



FAILLACE



GOLDSMITH



HAMSTRA



JACOBS



KESELMAN



NUNEZ



OVIawe



RANA



STEPHEN E. BRONSBURG, Ph.D., M.H.S.A., was promoted to associate professor in the Department of Health Informatics. Additionally, he coauthored the paper “An Exploratory Study of Patient Portal Adoption and Use in Multiple Clinical Specialty Departments,” which was published in the *Online Journal of Knowledge Management* in June. The paper was also presented on June 27 at the Knowledge Management Conference held at Warsaw University in Poland.

JASON COHEN, Ed.D., academic program coordinator for the Master of Science in Disaster and Emergency Management program, presented a session at the 21st Annual Federal Emergency Management Agency (FEMA) Higher Education Symposium on June 4 at the Emergency Management Institute in Emmitsburg, Maryland. The presentation highlighted Cohen’s dissertation results, which focus on the integration of FEMA’s next-generation core competencies in higher education programs.

NICOLE COOK, Ph.D., M.P.A., associate professor of public health, appeared on WLRN Miami/South Florida radio to discuss the topic of extending the time frame of compensation to the victims of mass shootings, such as the one that took place in February 2018 at Marjory Stoneman Douglas High School in Parkland, Florida.

ROGERIO FAILLACE, M.D., assistant professor of pediatrics, coauthored the article “Dyshidrotic Eczema in a Pediatric Patient: A Case Report,” which was published in the winter 2019 issue of the American College of Osteopathic Pediatricians *eJournal*. He coauthored the article with fourth-year student Christopher Larrimore, M.Sc.

ERIC A. GOLDSMITH, D.O., FACOS, assistant dean of clinical affairs, was named president of the Florida Osteopathic Medical Association (FOMA) when the existing president announced his sudden resignation. Goldsmith had been serving as FOMA president-elect prior to his sudden elevation to the top leadership spot.

JANET HAMSTRA, Ed.D., M.S., assistant dean of graduate medical education, was an invited faculty member for the Developing Faculty Competencies in Assessment: A Course to Help Achieve the Goals of CBME workshop held July 17-20 in Glendale, Arizona. The Accreditation Council for Graduate Medical Education and Midwestern University cosponsored the workshop.

ROBIN J. JACOBS, Ph.D., M.S.W., M.S., M.P.H., associate professor and director of graduate medical education and research, authored the article “Psychosocial and Behavioral Correlates of Internalized Homonegativity in Midlife and Older Gay and Bisexual Men” in the *Journal of Applied Gerontology* published May 29. Additionally, she co-delivered a presentation with the college’s dean, Elaine M. Wallace, D.O., M.S., M.S., M.S., M.S., titled “Advancing Global Health Care Education and Research” at Updates in Medicine 2019: A Global Health Retreat in Clearwater Beach, Florida, on June 2.

MARC M. KESELMAN, D.O., FACOI, FACC, FACR, director of the Division of Rheumatology and assistant professor of internal medicine, coauthored the article “Uveitis Sarcoidosis Presumably Initiated After Administration of Shingrix Vaccine” in the open-access medical journal *Cureus*.

MARIA VERA NUNEZ, M.D., M.S., ABOIM, IFMCP, assistant professor of clinical immunology and integrative medicine, recently earned her Master of Science in Biomedical Informatics degree from NSU’s Dr. Kiran C. Patel College of Osteopathic Medicine.

ELIZABETH OVIawe, Ph.D., Ed.S., M.Sc., M.M.I.S., M.S., director of the Division of Institutional Technology, received a 2019 American Association of Colleges of Osteopathic Medicine (AACOM) osteopathic institutional research grant in July for her project “Development of an Advanced 3-D Immersive Simulation-Based Application for Enhanced Interprofessional Core Competency and Patient-Centered Care.” The AACOM Research Grant Program supports research in osteopathic medical education by providing topic-specific medical education and institutional study grants to qualified applicants from the 35 accredited colleges of osteopathic medicine in the United States.

ARIF M. RANA, Ph.D., Ed.S., M.S., M.P.H., M.A., associate professor of biomedical informatics, medical education, and public health, chair of the Health Informatics Department, and director of the Master of Science in Biomedical Informatics program, earned his Master of Arts in Gerontology on May 31 from NSU’s Abraham S. Fischler College of Education and School of Criminal Justice.

MARY BETH SHEA, Ph.D., clinical assistant professor, was the 2019 recipient of the American Psychological Association/ Division 18 Psychologists in Public Service/VA Section Outstanding Training Director Award.

FACULTY/STAFF

Transitions



ANDERSON-WORTS



FLETCHER



HAZEL



KLIMAS



SADLER



SERNA

PAULA ANDERSON-WORTS, D.O., M.P.H., added a new responsibility to her position, which is reflected in her new title: assistant dean of faculty and alumni.

MARY ANN FLETCHER, Ph.D., reduced her hours to part-time status. She will continue to serve as the director of the Institute for Neuro-Immune Medicine's Diagnostic and Discovery Laboratory.

SADIO HAZEL, M.P.A., was promoted to the position of manager of clinical education, replacing Kara Brien, M.B.A., who left the college in May to launch her own business.

NANCY KLIMAS, M.D., assistant dean of research, was named the Schemel endowed chair of clinical immunology.

KATHY SADLER, who has served in several administrative roles throughout the years, was named director of graduate tracking, continuing medical education, and intramural affairs.

CLAUDIA SERNA, Ph.D., D.D.S., M.P.H., MCHES, CPH, assistant professor of public health, was named interim program director of the college's public health program.

New Hires

CLOEN BECKFORD, M.S., academic program coordinator I, started on July 1.

ELIZABETH FERNANDEZ, D.O., assistant professor of pediatrics, started on July 8.

JOEY GARCIA, B.S., medical communications coordinator, began on August 12.

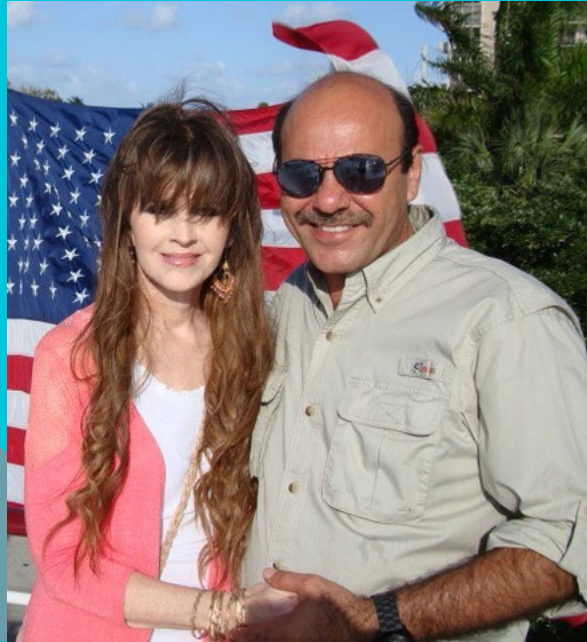
KRISTOPHER LALJI, M.S., CEME administrative coordinator II, started on July 1.

Note: A complete list of the new faculty and staff members who are exclusively working at the Tampa Bay Regional Campus will be published in the fall 2019 issue of *Collaborations*.

Getting to Know: DENISE RAOF

Executive Assistant to the Dean

STAFF SNAPSHOT



Denise and her husband Hoss are still going strong after 41 years of marriage.

Daughter Amanda and son-in-law Jason celebrate the 91st birthday of Denise's mother, Fay.



Jonathan Raof



Denise Raof and Elaine M. Wallace



FAMILY FACTS: I am married to my high school sweetheart, Hoss, and have two children. My son Jonathan, who recently graduated from the KPCOM's Master of Science in Biomedical Informatics program, is the associate vice president of clinical informatics for MCNA Dental Plans. My daughter Amanda, who is also an NSU graduate, is a molecular diagnostics scientist in Tampa, Florida, and plays the violin in the Tampa Bay Symphony Orchestra. Amanda and her husband are expecting their first child in November.

My beautiful 91-year-old mom has owned and operated a needlecraft shop in Tallahassee, Florida, for 41 years. In fact, she opened her shop the same year my husband and I got married. My other family member is my Maltese dog Mishka, who I adopted from the Humane Society three years ago. I love my family very much.

DATE OF HIRE: I started on January 14, 2008, working in the Department of Family Medicine with Dr. Pablo Calzada and the wonderful family medicine doctors.

OFFICIAL NSU-KPCOM RESPONSIBILITIES: In my role as the executive assistant to Dr. Elaine Wallace, I work hard to make sure Dr. Wallace is where she is supposed to be. Keeping her calendar is my most important responsibility, as she totally relies on me to keep and maintain it. Sometimes, it can become challenging, as many people want to see her, and there is only so much time in a day. But I enjoy it.

REASONS I ENJOY WORKING AT NSU-KPCOM: I work for the most wonderful, inspirational, and caring woman ever—Dr. Elaine Wallace. I also enjoy every minute working with my girls Nancy, Odessa, and Shauntae. I am truly blessed. I look forward to coming to work every day, because I know a wonderful and caring team in the dean's office surrounds me.

Getting to Know: DENISE RAOF

WHAT DID YOU DO PROFESSIONALLY BEFORE JOINING NSU-KPCOM? I have always worked in administration. I spent five years working in the business services, chemistry, educational research, and postal services departments at Florida State University in Tallahassee. After moving to South Florida, I worked at an interior design company called Creative Environs in Coral Gables, Florida. We then relocated to Broward County in 1997 and built our dream home.

GREATEST ACHIEVEMENT IN LIFE: Being married to the love of my life for 41 years.

FAVORITE WAY TO UNWIND WHEN NOT AT WORK: Going places with my husband, taking long walks with my dog, going to the beach, and watching horror movies.

MY COWORKERS WOULD BE SURPRISED TO KNOW THIS ABOUT ME: I love belly dancing and playing the darbuka drum.

WHEN I RETIRE, I PLAN TO: My goal is to travel to many countries, especially Australia, where my mother was born. I also plan to go back to Iran, which I've been to twice. It's a beautiful country.

THREE WORDS THAT BEST DESCRIBE ME: Loyal, funny, and caring

Mishka Raof



Denise displays her Halloween spirit with NSU President and CEO George L. Hanbury II, Ph.D.



FACULTY MEMBERS RECEIVE NSU PRESIDENT'S RESEARCH GRANTS

On May 7, a number of KPCOM faculty members, in collaboration with other NSU faculty researchers and students, received grants in the university's 20th Annual President's Faculty Research and Development Grant (PFRDG) awards ceremony.

During the event, 29 research projects received PFRDG awards of up to \$15,000 each for fiscal year 2020. Various university researchers received a cumulative \$346,476 in awards. The ceremony also recognized the dedication and innovation of the 74 faculty members and 56 students from the 12 academic units that submitted 40 PFRDG proposals. There are two funding tracks involved: the Research Development Track providing up to \$15,000 and the Research Scholar Track providing up to \$3,000.

This innovative internal grant initiative is designed to provide seed funds for potential research projects. The ultimate goals are to publish the results for the common good, enrich students' education experiences, and leverage preliminary results to pursue and acquire additional funding from external sponsors.

KPCOM FACULTY RECIPIENTS OF THE PRESIDENT'S FACULTY RESEARCH AND DEVELOPMENT GRANTS

Alison Bested, M.D.
Cyril Blavo, D.O., M.S., M.P.H. & T.M.
Marilyn Gordon, Ed.D.
Nancy Klimas, M.D.
Lubov Nathanson, Ph.D.
Maria Vera Nunez, M.D.
Violetta Renesca, M.S.N.
Irina Rozenfeld, M.S.N., A.R.N.P.



AIMING HIGHER



Participants Relish Medical School Immersion Experiences

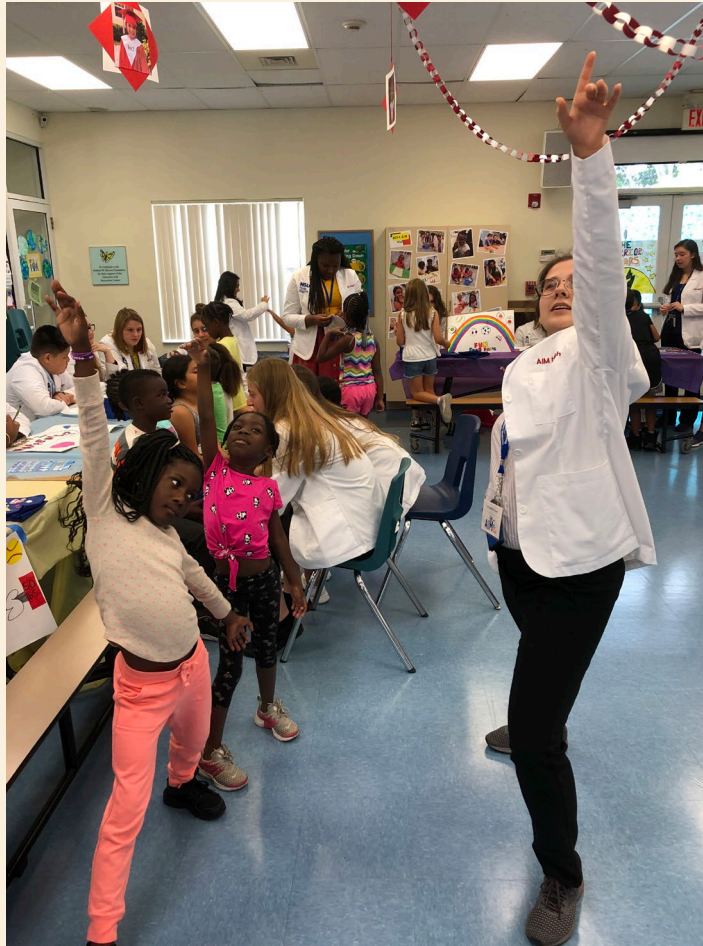
By Linda E. Maurice, M.A., Director
Community Education and Lifelong Learning

The KPCOM's prestigious medical school immersion experiences—AIM-High and AIM-Higher—had their most successful events ever in June. In addition to record enrollment and a wonderful schedule of hands-on medical experiences at NSU's Fort Lauderdale/Davie Campus, each program participated in enriching and collaborative community service projects.

AIM-High campers created and ran two interactive fairs at the Kids in Distress Fort Lauderdale campus, with one geared toward hands-on science experiments and the other a health fair during the second week. Kids in Distress is a nationally accredited agency dedicated to the prevention of child abuse, the preservation of the family, and the treatment of abused and neglected children. The kindergarten through fifth-grade campers were enthralled by the AIM-High teenagers and were in awe of the fact that they wore medical lab coats.

The advanced and returning AIM-Higher campers experienced an intensive week of activities, including full fetal pig dissection, working with the Lucina Birth Simulator during a section on labor, delivery, and newborn infant care, as well as learning about osteopathic manipulative treatment and standardized patient care.

They also enjoyed an interactive afternoon at Covenant Village of Florida in Planation learning about aging and older adult interests and lifestyles. They were even able to spend time with the KPCOM's former dean, Anthony J. Silvagni, D.O., Pharm.D., M.S., FACOPF *dist.*, FCPP, and his wife, Dianna Silvagni, J.D., who recently moved to the community.



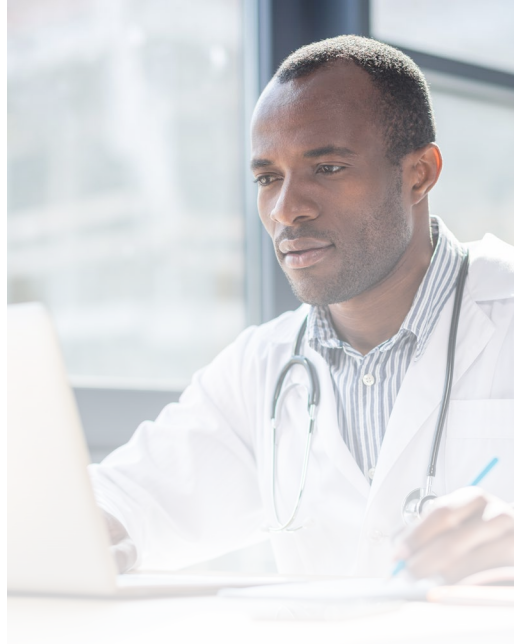
AIMING HIGHER continued...

For the AIM-Higher community service project, the campers spent an afternoon with special needs actors from the Exceptional Theater Company. Together, the group worked on skits and learned how to perform and sign the song *What a Wonderful World*.

More than 100 high school students participated in the June programs. This truly collaborative effort would not have occurred without the dedication of many energetic KPCOM faculty and staff members and amazing second-year student volunteers.



EXCEPTIONAL THEATER COMPANY



OPIOID USE PREVENTION DISORDER EDUCATIONAL GRANT SUBMITTAL

The Florida Department of Children and Families requested that the Dr. Kiran C. Patel College of Osteopathic Medicine submit a grant proposal for \$275,000 to cover a 13-month period beginning September 1, 2019. The grant would address the educational needs of emerging physicians related to opioid use disorder prevention, assessment, treatment, and emergency response.

The project would integrate learning opportunities to enhance future physician skills throughout the four-year medical education program. Members of the KPCOM team are James Howell, M.D., M.P.H. (project director); Rebecca Cherner, D.O. (co-project director); Darren Cohen, D.O.; Marie Florent-Carre, D.O., M.P.H.; Annisah Ishmael, Ed.D., M.S.; Robin J. Jacobs, Ph.D., M.S.W., M.S., M.P.H.; Naushira Pandya, M.D., CMD; and Sweta Tewary, Ed.D., M.S.W.



LIVING THE VALUES RECIPIENT

The purpose of the Living the Values program is to recognize coworkers who are living NSU's eight core values on a continuum. Each month, the college solicits nominations for that month's specific core value. Two winners will be selected monthly representing both a faculty and a staff member, if applicable.

The May scholarship/research winner was **Robin J. Jacobs, Ph.D., M.S.W., M.S., M.P.H.**, associate professor and director of graduate medical education and research.

GRANTS UPDATE

Due to the confidentiality clauses of certain grant agreements, we are only permitted to publish funded grants that are listed monthly in the Office of Sponsored Programs administrative report package.



NSU GWEP

Amount: \$714,218

Principal Investigator

Naushira Pandya, M.D., CMD

Funder

US DHHS–Health Resources and Services Administration

Project Period

July 1, 2019–June 30, 2020



Boston Biorepository, Recruitment, and Integrative Network (BRAIN) for GWI

Amount: \$487,978

Principal Investigator

Mary Ann Fletcher, Ph.D.

Funder

Boston University

Project Period

September 1, 2018–August 31, 2021



Adolescent Medicine Trials Network for HIV/AIDS Interventions (ATN) Coordinating Center

Amount: \$100,024

Principal Investigator

M. Isabel Fernandez, Ph.D., M.A.

Funder

University of North Carolina Chapel Hill

Project Period

June 1, 2019–May 31, 2020



Adolescent Medicine Trials Network for HIV/AIDS Interventions (ATN) Coordinating Center

Amount: \$72,027

Principal Investigator

M. Isabel Fernandez, Ph.D., M.A.

Funder

University of North Carolina Chapel Hill

Project Period

June 1, 2019–May 31, 2020



Application of Lipidomics to Identify Biomarkers of Immune and Mitochondrial Disturbances in Chronic Fatigue Syndrome

Amount: \$43,225

Principal Investigator

Nancy Klimas, M.D.

Funder

Roskamp Institute

Project Period

December 21, 2018–November 30, 2019



Adolescent Medicine Trials Network for HIV/AIDS Interventions (ATN) Coordinating Center

Amount: \$39,034

Principal Investigator

M. Isabel Fernandez, Ph.D., M.A.

Funder

University of North Carolina Chapel Hill

Project Period

June 1, 2019–May 31, 2020



Scale it Up: Effectiveness-Implementation Research to Enhance HIV-Related Self-Management Among Youth

Amount: \$35,775

Principal Investigator

M. Isabel Fernandez, Ph.D., M.A.

Funder

Florida State University

Project Period

June 1, 2019–May 31, 2020



Cooperative Project to Develop and Provide Opioid Training for Students and Professionals in the Medical Field

Amount: \$19,474

Principal Investigator

Steven Zucker, D.M.D., M.Ed.

Funder

Florida State University

Project Period

March 25, 2019–June 6, 2019



Naushira Pandya

KPCOM Receives \$3.5-Million GWEP Grant

Thanks to the efforts of Naushira Pandya, M.D., CMD, FACP, professor and chair of the Department of Geriatrics and project director of the college's Florida Coastal Geriatric Resources, Education, and Training Center, the KPCOM received a \$3.5-million federal grant to fund a Geriatrics Workforce Enhancement Program (GWEP.) The national GWEP initiative was created to help establish a health care workforce that maximizes patient and family engagement and integrates geriatrics and primary care.

"This program is designed to educate and train the primary care and geriatrics workforce to attend to older adults using an integrated care model," Pandya said. "At NSU, interprofessional collaboration is in our DNA, so this grant will allow us to bring that approach to the area of geriatrics. With an aging population, it's vital that those in the health care profession work together to ensure they provide the best care possible for their patients."

According to U.S. Census data, the nation's population age 65 and older is expected to nearly double over the next 3 decades, jumping from 48 million to 88 million by 2050. With that in mind, it's clear that providing for the health care needs of older adults is going to play a prominent role in the nation's future.

The grant, which began on July 1 and is expected to run through June 30, 2024, is supported by the Health Resources and Services Administration (HRSA) of the U.S. Department of Health and Human Services (HHS) as part of an award of up to \$3.5 million financed from governmental sources. The contents are those of the author(s) and do not necessarily represent the official views of, nor an endorsement, by HRSA, HHS, or the U.S. Government.

Pandya said there is a shortage in trained geriatricians and primary care health providers, as well as other health professionals, who possess adequate training in geriatrics to fill

the complex health care needs of older adults. The project is designed to meet those challenges head-on as an ambitious collaborative effort, with partners that include the Charles E. Schmidt College of Medicine at Florida Atlantic University, graduate medical education programs and primary care sites, as well as multiple community organizations.

"We want to create a collaborative model where we provide training to those who will be on the frontlines working with older adults," Pandya said. "We want to ensure that all providers have the knowledge, skills, and attitudes to provide whole-person geriatric care for older patients by fostering integration of age-friendly health care principles and practices into clinical sites with increasing community engagement. I am confident that promoting the transformation of primary care practices to position them for value-based care and alternative payment models will lead to improved health outcomes for older adults."



Senior Week Photo Gallery

Senior Week provided numerous opportunities for the class of 2019 students to celebrate their long-awaited KPCOM graduation while attending an afternoon awards presentation, participating in a celebratory bash at the Rooftop on Las Olas Boulevard in Fort Lauderdale, and attending the Senior Awards Dinner Dance at The Diplomat Beach Resort in Hollywood. The week culminated on May 17 when a multitude of KPCOM graduates received their degrees during the Health Professions Division Commencement Ceremony held at the Rick Case Arena at the Don Taft University Center on NSU's Fort Lauderdale/Davie Campus.



Senior Week Photo Gallery *continued...*



Faculty/Staff Members Earn Golden Apples

During the Senior Awards Dinner Dance held May 16 at The Diplomat Beach Resort in Hollywood, Florida, the following faculty members received Golden Apple awards from the students in recognition of the dedication they exhibited in their respective programs.

Golden Apple Award (Osteopathic Medicine)

Kara Brien, M.B.A.

Golden Apple Award (Master of Public Health)

Cyril Blavo, D.O., M.S., M.P.H. & T.M., FACOP

Golden Apple Award (Biomedical Informatics)

Harold E. Wiggin, Ed.D.

Golden Apple Award (Medical Education)

Mary Ann Butler-Pearson, Ed.D.

Golden Apple Award (Disaster and Emergency Management)

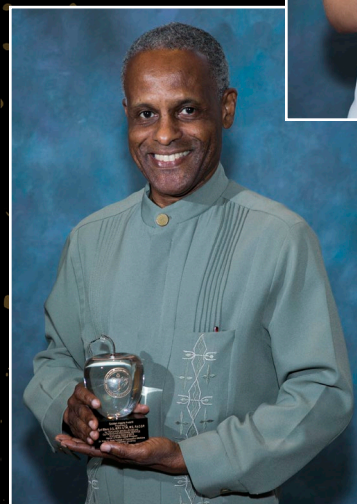
James Greenstone, Ed.D., J.D.

Golden Apple Award (Nutrition Program)

Lillian Craggs-Dino, D.H.A., RDN, LDN, CLT



Kara Brien



Cyril Blavo



Harold E. Wiggin



Dr. Kiran C. Patel College of
Osteopathic Medicine
NOVA SOUTHEASTERN UNIVERSITY

NSU
Florida

Nova Southeastern University is accredited by the Southern Association of Colleges and Schools Commission on Colleges to award associate's, baccalaureate, master's, educational specialist, doctorate, and professional degrees. Contact the Commission on Colleges at 1866 Southern Lane, Decatur, Georgia 30033-4097 or call 404-679-4500 for questions about the accreditation of Nova Southeastern University.

Nova Southeastern University admits students of any race, color, sex, age, nondisqualifying disability, religion or creed, sexual orientation, gender, gender identity, military service, veteran status, or national or ethnic origin to all the rights, privileges, programs, and activities generally accorded or made available to students at the school, and does not discriminate in administration of its educational policies, admissions policies, scholarship and loan programs, and athletic and other school-administered programs. Any such acts are unacceptable and strictly prohibited by the university.