



the LIFELONG LEARNING INSTITUTE

Nova Southeastern University College of Osteopathic Medicine

*"Education is the kindling of a flame,
not the filling of a vessel."
— Socrates*

VOLUME 8 • ISSUE 1 • SUMMER 2017

WELCOME TO THE LLI'S NEW HOME AT NSU'S EAST CAMPUS

By Linda E. Maurice, M.A., LLI Director



In April, the Lifelong Learning Institute (LLI) relocated to its new, big, beautiful home in Fort Lauderdale on the Nova Southeastern University (NSU) East Campus in the Alumni Hall Building. While everyone has settled into the wonderful facility, very few people know about the history of NSU's East Campus. With the help of the NSU Shepard Broad College of Law archives, I decided to delve into the past.

NSU was founded in Fort Lauderdale, Florida, during a time of historic social and cultural change. Looking back, 1964 was the perfect time for a small university with a handful of students and some revolutionary ideas to take shape. In 1973, in an effort for Nova University to strengthen ties with the South Florida community, Broward County pioneer and landowner Hamilton Forman, and Alex Schure, an American academic and founder of the New York Institute of Technology, proposed opening a law

school to the university's then president—Abraham "Abe" Fischler, Ed.D.

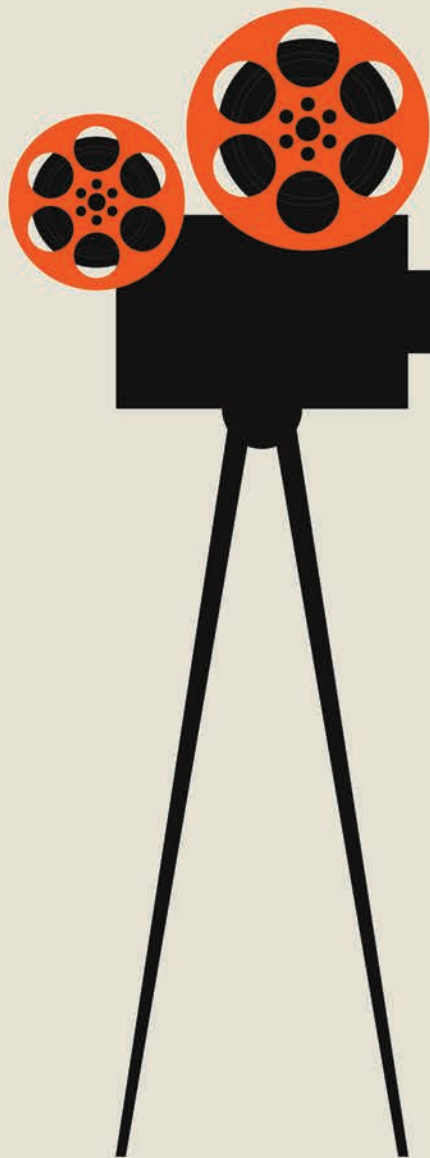
At the time, the only other law school in the area was at the University of Miami. Peter W. Thornton, the first dean, promised that the school would provide men and women with not only a firm grounding in "legal knowledge and techniques," but also "a deep and sincere realization of the responsibility and dignity of the legal profession." The law school, formerly named The Center for the Study of Law of Nova University, became Florida's fifth law school. The first location for The Center for the Study of Law was in the Parker Science Building on NSU's Fort Lauderdale/Davie Campus.

In August 1979, as part of a concerted effort to improve the size and quality of the faculty and expand the school, the law school moved to a new, 64,000-square-foot building on SW 9th Avenue in Fort Lauderdale. The American Bar Association viewed this, along with

other favorable factors of the university, as a major improvement on the state of the law school.

In 1981, the law school would receive full accreditation from the American Bar Association. In 1989, a Belarusian-American banker, philanthropist, and lawyer named Shepard Broad made a generous donation of \$3 million to the Law Center. Fischler, who was president at the time, announced that the Nova Center for the Study of Law would be renamed the Shepard Broad Law Center of Nova University and would be moved back to the Fort Lauderdale/Davie Campus and into the Leo Goodwin Sr. Hall. The new Shepard Broad Law Center building opened its doors in 1992.

A few current LLI members have shared memories of using our current classroom/auditorium when it was the law library for the original Law Center. The Lifelong Learning Institute is proud to continue the storied heritage of this great NSU building.



NEW PARTNERSHIP ANNOUNCEMENT

The LLI Joins Forces with

Savor Cinema and Cinema Paradiso Hollywood

By Michelle Filippi, Operations Director, Savor Cinema and Cinema Paradiso

Savor Cinema and Cinema Paradiso Hollywood—the official theaters of the Fort Lauderdale International Film Festival (FLIFF)—are proud to announce a new cultural partnership with the Lifelong Learning Institute, which offers LLI members a “vacation from ordinary film.” As a nonprofit organization, the goal of the FLIFF is to promote arts through independent movies, American indies, and foreign films from all over the world.

Save the date for the 32nd Annual Fort Lauderdale International Film Festival, which will take place November 3–19, and be sure to enjoy this unique cinematic experience at the best in price in town. During the summer, LLI members will pay only

\$7 per movie ticket and receive a loyalty card, which provides a free movie after 10 visits.

At the same time, all FLIFF members are invited to participate in the LLI summer session of classes for free and attend the upcoming Fall Welcome Week, which will be held October 2–5. Become an LLI member and receive a 20 percent discount to be both an LLI and FLIFF member.

More details will follow in the summer about this exclusive membership offer. For more information about Savor Cinema and Cinema Paradiso Hollywood, please contact Michelle Filippi at (954) 525-3456, ext. 101, or *email michellef@fliff.com*.

THE LLI IS TURNING 40!

Hold the date! Join us for the 40th anniversary of the LLI on Sunday, October 15 from 2:00–5:00 p.m. at the Savor Cinema in Fort Lauderdale. The afternoon will include libations and hors d'oeuvres, entertainment, and recognition of volunteers and faculty and staff members.

Tickets will be available in August. For anyone interested in being an event sponsor, please contact Linda Maurice at (954) 262-8471 or email *lmaurice@nova.edu*.



THE LLI DIVERSITY PROGRAM

WELCOME TO THE FAMILY

The LLI welcomed 64 new members in this academic year. We are happy to have all the wonderful, new faces added to our classroom, celebrations, and events.

SAVE THE DATES

Fall Welcome Week

October 2–5, 2017

40th Anniversary Celebration

October 15, 2017

2016–17 ACADEMIC YEAR TRIBUTE FUND DONATIONS

Anonymous

(scholarship for an LLI member)

Richard Ascher

(four donations in memory or in honor of his wife Shelley Stone, Rudy Ameerally, Dr. Aimee Zadak, and Father Charles Parks)

Bookworms

(in appreciation of the LLI)

Broward Coalition on Aging

Maxine Jordan

(in honor of Silas—Beth's grandson)

Rona Levitt

(in memory of Annette Annis and Abe Fischler)

Deborah Lombard

(ETC)

Linda Maurice

(in memory of Annette Annis and Abe Fischler)

Cecelia Solomon

(in memory of Danielle Dannas and Samuel M. Faysal)

Judy and Jon Vetter

(in memory of Dorothy Caplan)

Mady and Eli Wilk

The long-term Lifelong Learning Institute strategic plan calls for providing educational and life-enriching services to all diverse communities within the institute's reach. Several months ago, in keeping with the LLI strategic plan, and in conjunction with the Membership Advisory Committee (MAC), a subcommittee on diversity outreach was established and led by LLI member Suzanne Parker and supported by members Barry Shapiro and Frank Stewart.

The relocation of the LLI to its new facilities on the NSU East Campus serendipitously provides enhanced opportunities to collaborate with several well-established institutions in the Greater Fort Lauderdale area that could assist in broadening the LLI membership and meet the LLI's strategic goals. The LLI Diversity Subcommittee is in discussions with the leadership of the widely known African American Research Library and Cultural Center (AARLCC)—a division of the Broward County Library system, which is located just minutes from the LLI's new site. As a result of these initial discussions, it appears there are significant opportunities for collaboration, program coordination, and mutual support.

These preliminary discussions with the AARLCC have identified several other avenues of outreach and communication that clearly deserve exploration. The subcommittee is continuing to gather data in anticipation of providing a report and recommendations to the MAC later this spring.





The LLI members enjoy the weather on the veranda of our new headquarters.

FOR MORE INFORMATION ABOUT THE LLI

Call: (954) 262-8471

Email: lli@nova.edu

Web: nova.edu/lifelonglearning

Facebook: facebook.com/llinsu

Twitter: twitter.com/LLINSU

Instagram: instagram.com/nsulifelonglearning

YouTube: youtube.com/llinova

The *LLI Newsletter* is a product of the LLI Members Advisory Committee and is designed and edited by the NSU-COM Office of Medical Communications and Public Relations.

THE LLI MISSION:

Nova Southeastern University's Lifelong Learning Institute (LLI) provides a vibrant educational environment for mature adults in South Florida. Programs promote intellectual stimulation, physical well-being, and social growth that enrich the lives of its members and the community.



NSU HEALTH PROFESSIONS DIVISION
FORT LAUDERDALE/DAVIE CAMPUS



**NOVA SOUTHEASTERN
UNIVERSITY**
**College of Osteopathic Medicine
Lifelong Learning Institute**

Nova Southeastern University is accredited by the Southern Association of Colleges and Schools Commission on Colleges to award associate's, baccalaureate, master's, educational specialist, doctorate, and professional degrees. Contact the Commission on Colleges at 1866 Southern Lane, Decatur, Georgia 30033-4097 or call 404-679-4500 for questions about the accreditation of Nova Southeastern University. • Nova Southeastern University admits students of any race, color, sex, age, nondisqualifying disability, religion or creed, sexual orientation, or national or ethnic origin to all the rights, privileges, programs, and activities generally accorded or made available to students at the school, and does not discriminate in administration of its educational policies, admissions policies, scholarship and loan programs, and athletic and other school-administered programs.